



# YUCO micro-AUVs used with confidence

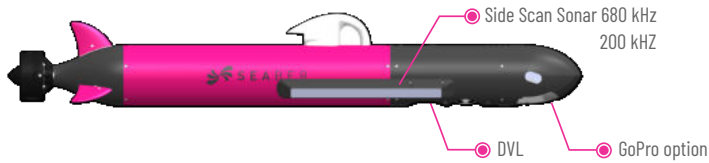
- ▶ Reliable and efficient
- ▶ Unique navigation technology INX
- ▶ Operable in any offshore conditions
- ▶ Multiple payloads
- ▶ Easy to use

## YUCO Key Features

Length : 98 cm to 123 cm  
 Weight : 9.5 kg to 10.5 kg  
 Diameter : 12 cm  
 Depth rating : 300 meters  
 Autonomy : 8 hours to 10 hours  
 Navigation Accuracy : +/- 2%



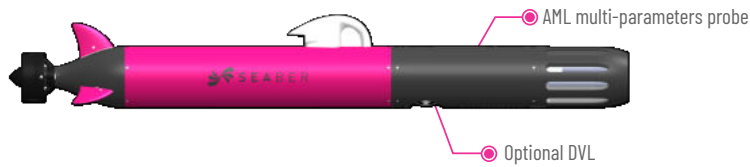
### YUCO-SCAN



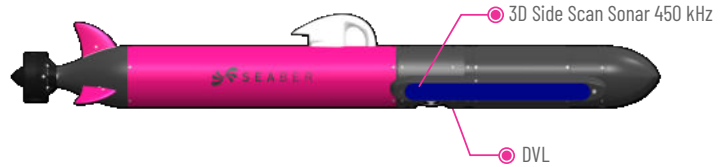
### YUCO-CTD



### YUCO-PHYSICO



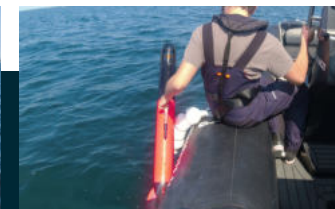
### YUCO-3DSS



### YUCO-LUMEN



### YUCO-eDNA



"YUCO is the world's only off-the-shelf micro-AUV operable in all types of coastal waters. It combines exceptional performances and low maintainability."



### Highly precise marine navigation embedded navigation INX

The **INX**®, for Intuitive Navigation eXperience, is a unique in-house software suite that provides **YUCO** with great navigation accuracy without requiring any external elements like acoustics positioning systems. Associated with a DVL, the **INX**® provides even more accurate positioning to precisely locate the data gathered by **YUCO**. Through the **SEAPLAN** user interface, **INX**® also makes the calibration process as simple as pressing a button.

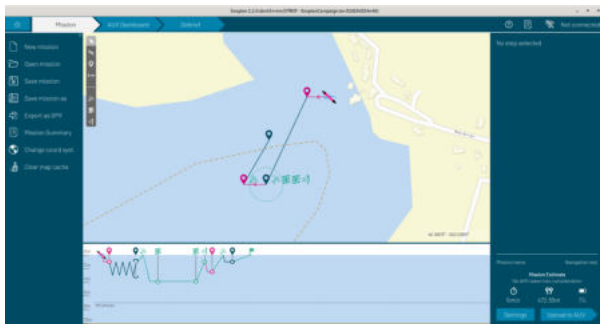
### Surface communication and recovery using SEACOMM

**SEACOMM** is a rugged remote controller dedicated to **YUCO** recovery. Through UHF communication, it can locate the AUV up to 5 km. **YUCO** is equipped with a complete antenna system for GPS and UHF surface communication. An optional underwater pinger, a powerful embedded flashlight and the signature pink coating makes the **YUCO** recovery a safe and sound process.



### Mission planning

Using the **SEAPLAN** user interface, you can program a mission in less than 5 min, using the predefined patterns like transects, lawnmower or screws. If needed, any mission feature can be set, like special navigation modes associated to specific payloads such as « shutdown surfacing », ideal for CTD and PAM. The **SEAPLAN** interface is accessible via Wifi through different platforms. **YUCO** can also be recharged while being programmed for a new mission.



Every **YUCO** comes with a set of accessories, including spare fins and a rugged transportation case especially designed to easily and safely move the **YUCO** anywhere.



## Contact

SEABER SAS  
29 Cours de Chazelles  
56100, Lorient  
FRANCE  
sales@seaber.fr  
www.seaber.fr

This document consists of marketing information subject to change without notice. Please contact us for the latest revision.

With YUCO, take your measurement further

